

A Glimpse of Tree Maintenance Works



Before construction, overall assessment has been conducted to trees inside the site. Upon the approval of relevant government department, trees will be preserved, transplanted or removed.

During construction, the project staff will first carry out tree protection measures for the preserved trees (Figures 1 and 2) and install the strengthening facilities (Figure 3) for the newly transplanted trees to ensure healthy growth of trees.

We have also engaged with tree experts in accordance with the tree preservation policy, to carry out annual risk assessment of trees. During construction, we regularly inspect tree growth (Figure 4) to ensure that the growth of trees will not be affected by the project.

Bond with Communities



Finding a Way Out for Stray Dogs Around the Site

The contractor invited animal protection organisations and volunteers to deal with stray dogs issue around the site.

Visit the Elderly



Representatives from the consultant and the contractor went to Po Tat Estate to visit single elderlies' home. Gifts were also presented.

Briefing of the Project

The project team briefed the Kwun Tong District Councillors and the resident representatives of On Tat Estate and Po Tat Estate on the project progress, as well as actively provided feedback on the construction impact to residents nearby.

Information and Enquiries



You are welcome to contact us with your suggestions:

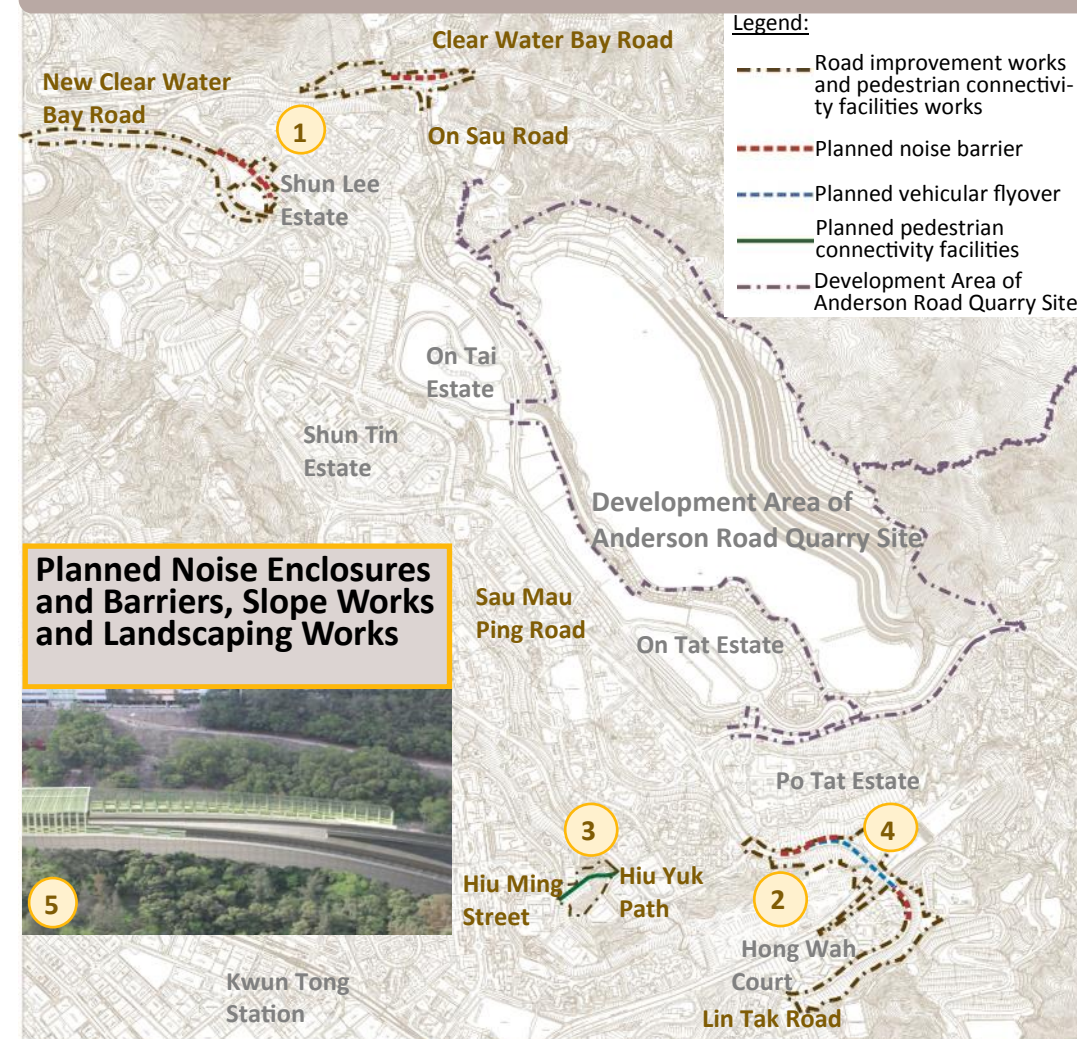
24- hour Hotline/Whatsapp: **9669 7120**

Email: spro@arqaecom.com

Development of Anderson Road Quarry Site

Welcome to the fourth issue of the Newsletter for the Development of Anderson Road Quarry Site. In this newsletter, we will provide the project progress and the relevant information. We also welcome your feedback and suggestions on the project.

Upcoming Works



Planned Noise Enclosures and Barriers, Slope Works and Landscaping Works

Road Improvement Works and Pedestrian Connectivity Facilities Works



Road Improvement Works and Pedestrian Connectivity Facilities Works

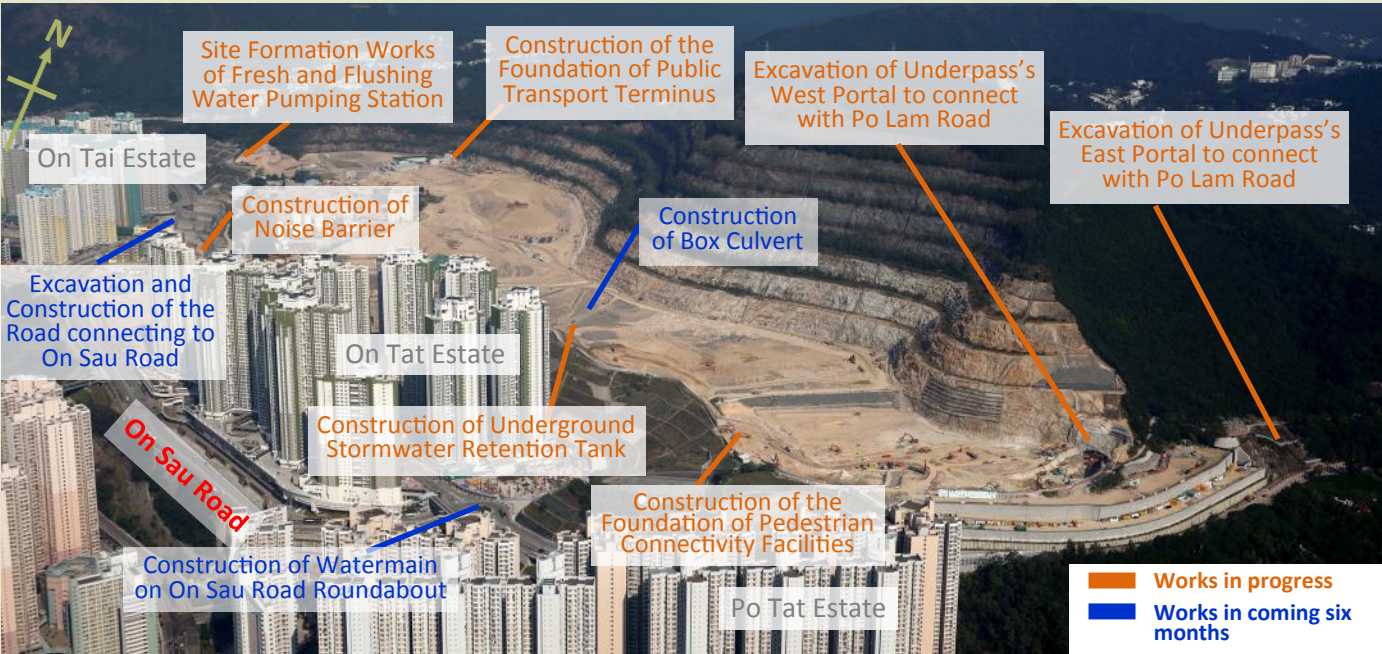
The project of road improvement works and pedestrian connectivity facilities works are scheduled to commence in early 2018 and will be completed in 2023.

The works mainly comprise:

- 1 Road improvement works at junction of Clear Water Bay Road and On Sau Road, and New Clear Water Bay Road near Shun Lee Tsuen Road
- 2 Construction of a vehicular flyover from Lin Tak Road to Sau Mau Ping Road and provision of laybys at Lin Tak Road
- 3 Construction of pedestrian connectivity facilities, including footbridge, lift towers and escalators in Kwun Tong district
- 4 Provision of public toilet for the proposed bus-to-bus interchange at Tseung Kwan O Tunnel Toll Plaza, and
- 5 Associated noise enclosures and barriers, slope works and landscaping works

Works in Progress

Works in Progress and in Coming Six months Inside the Development Area



Works in Progress and in Coming Six Months Outside the Development Area



Temporary Traffic Arrangements

Road	Details of Temporary Traffic Arrangements
Po Lam Road	Temporary closure at the Northbound slow lane towards Tseung Kwun O direction near Ma Yau Tong Village
On Sau Road	Temporary closure at a section of the Eastbound slow lane towards On Tat Estate direction adjacent to On Yan Street
Roundabout at the junction of On Sau Road and On Chui Street	Temporary closure at the Westbound slow lane of On Sau Road towards On Tat Estate in early 2018

Environmental Mitigation Measures

Since its commencement, the Development of Anderson Road Quarry Site has implemented a series of effective mitigation measures to reduce the impacts on nearby residents. Noise monitoring and dust control are two major categories:

Noise Monitoring

Under the environmental monitoring and audit program, the environmental data collected are in compliance with the relevant statutory requirements. The monitoring data shows that the noise generated by construction works is at a satisfactory level. However, we will enhance noise control and continue to carry out the following mitigation measures so as to minimize the impact on nearby residents.



Heads of breakers are wrapped by acoustic materials to lower the noise level.



Noise barriers are erected on site to mitigate noise nuisance to residents.



Noise measuring are implemented regularly in nearby housing estates such as On Tat Estate, On Tai Estate and Po Tat Estate. Construction noise generated by the works are being monitored in a proactive way.



In addition to erecting noise barriers, containers between rock breaking area and nearby residential area can further reduce construction noise effectively.

Dust Control



Mist cannons are placed in the construction site.



Mist sprayers are installed along haul road.



Spraying regularly by water trucks in the construction site.